

# PILAT EUROPE LIMITED

Talent Management  
In The Private Sector



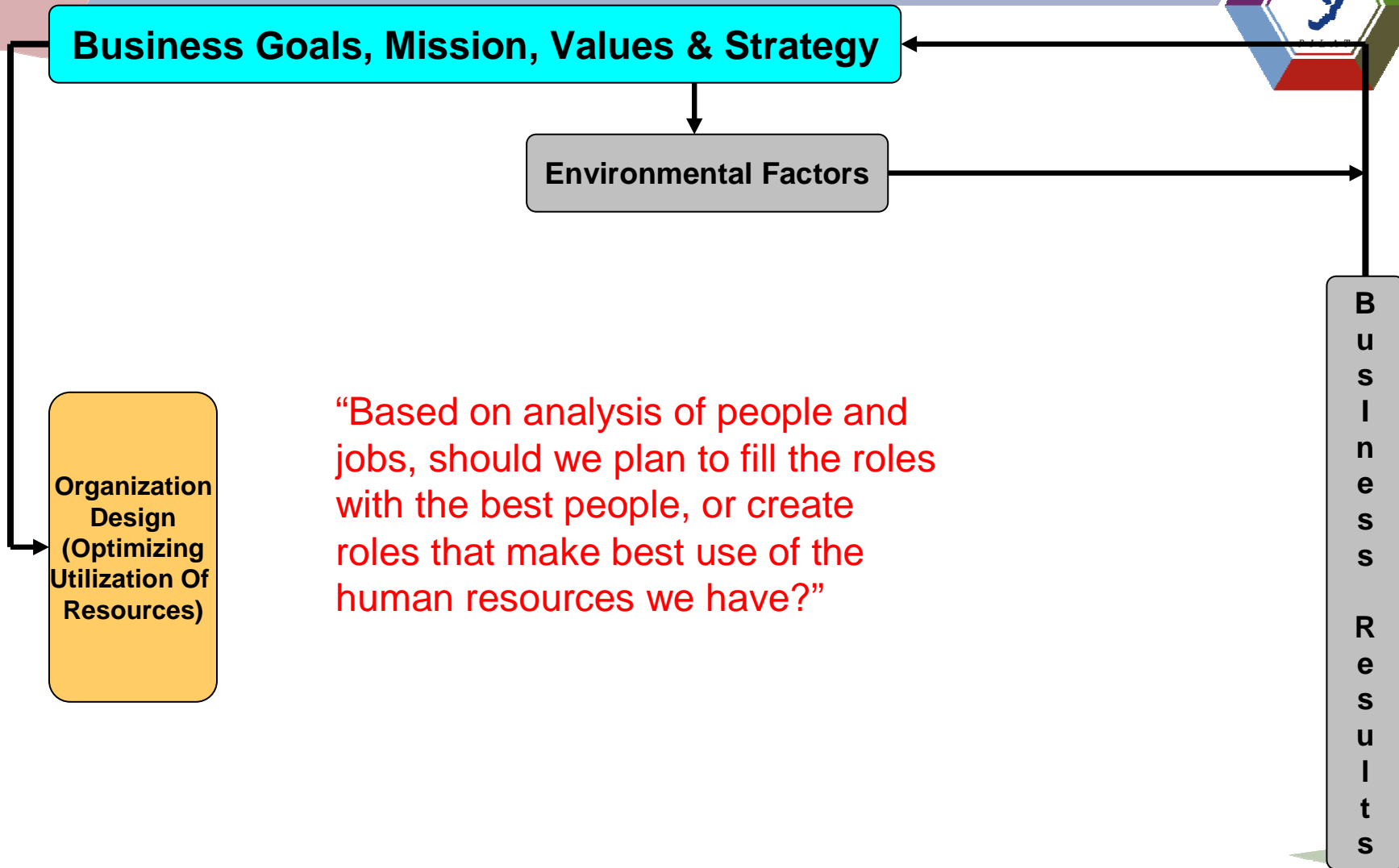
# What is Talent Management



“A set of interlinking processes via which an organization ensures that, as best it can, it has the most appropriate people in the right roles at the right time and can continue to do so in the foreseeable future.”

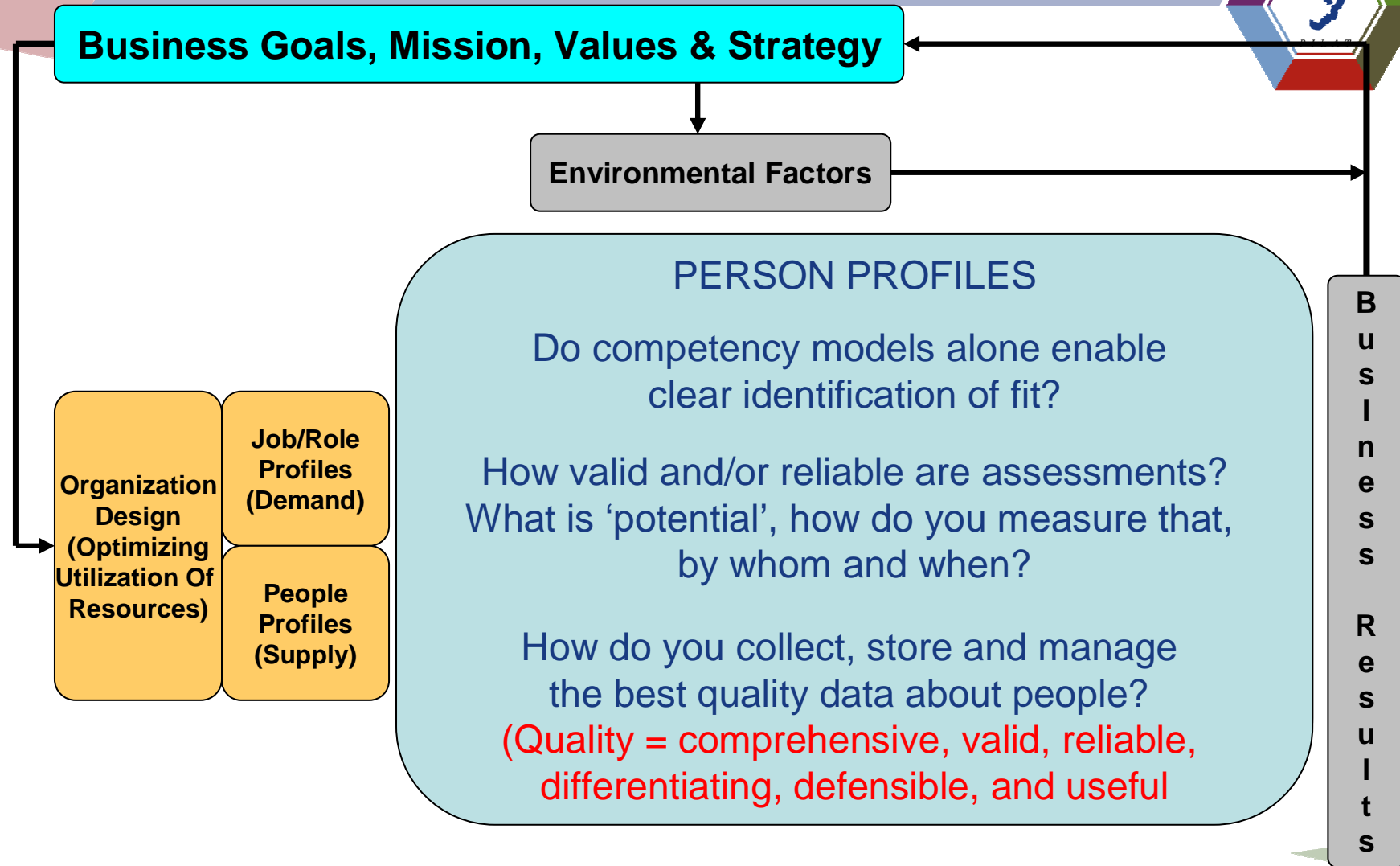


# A Contemporary Model

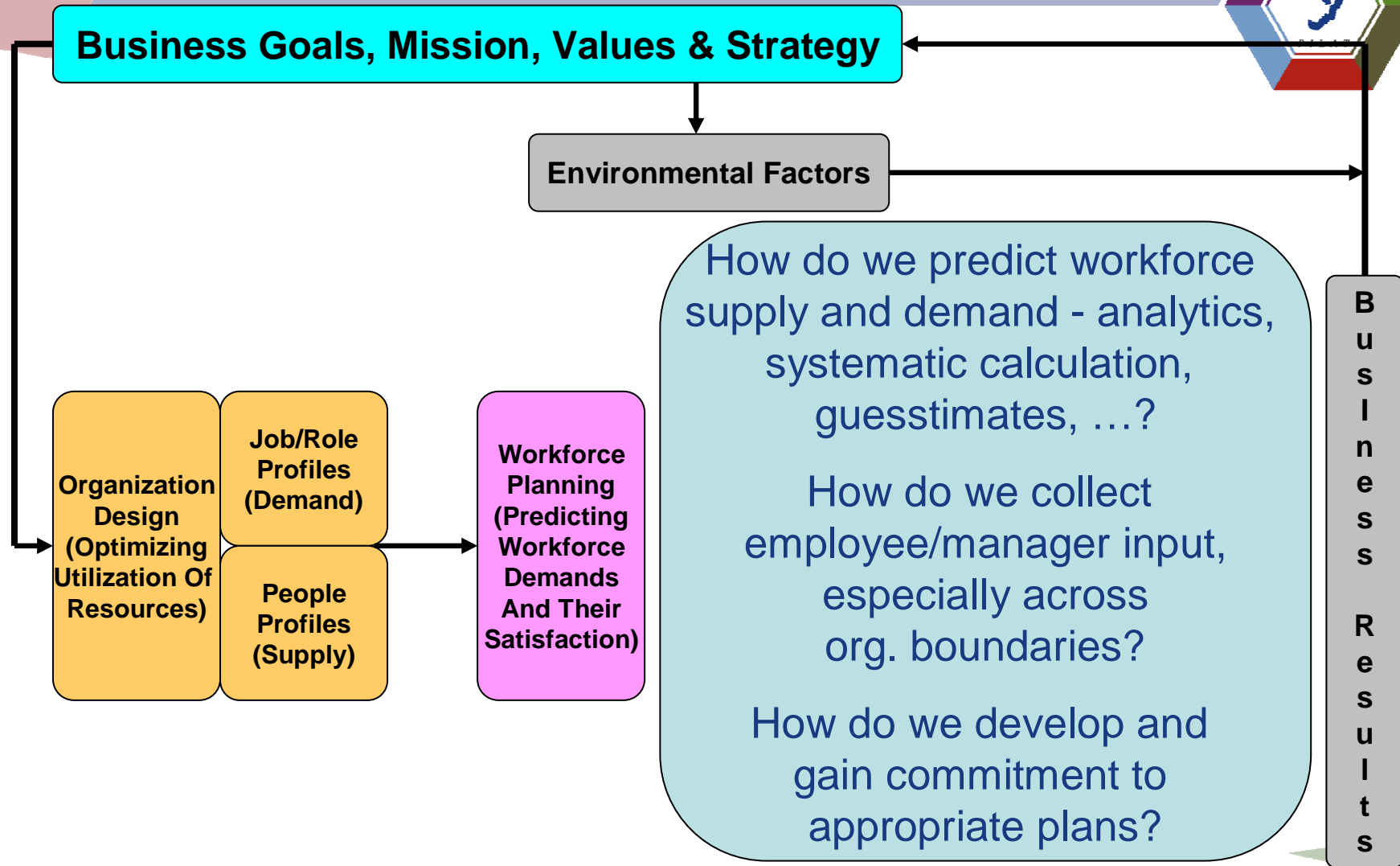


“Based on analysis of people and jobs, should we plan to fill the roles with the best people, or create roles that make best use of the human resources we have?”

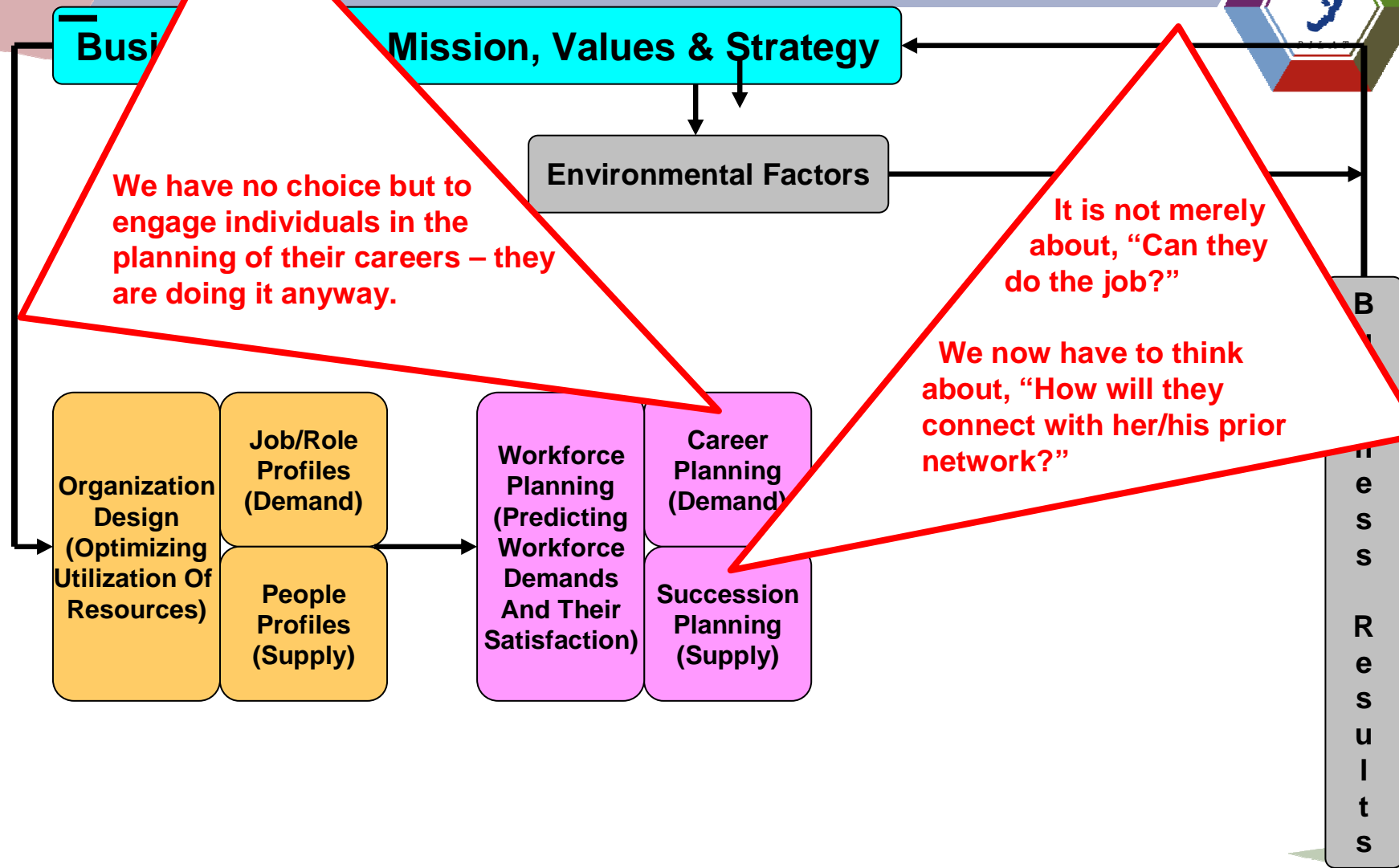
# A Contemporary Model



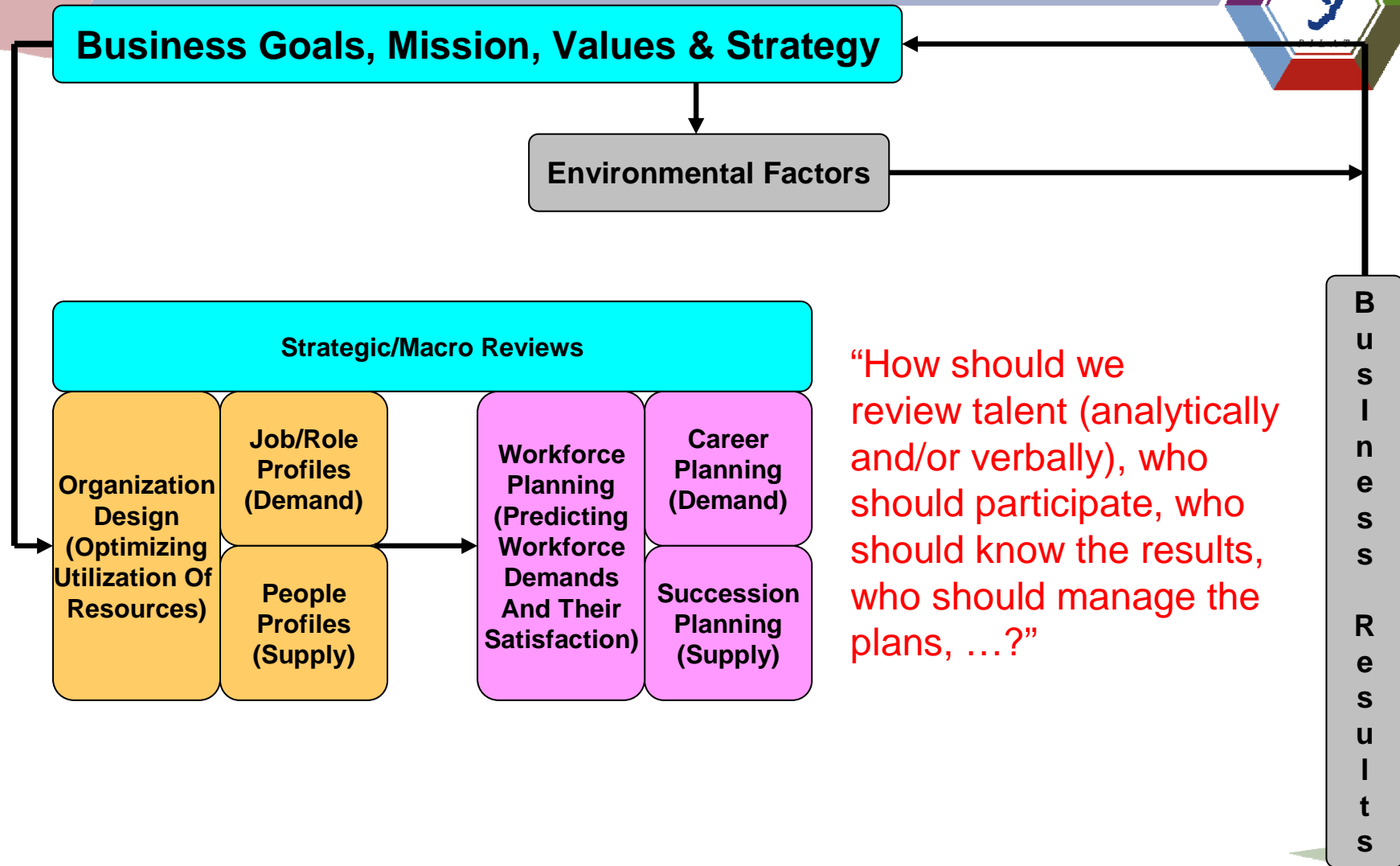
# A Contemporary Model



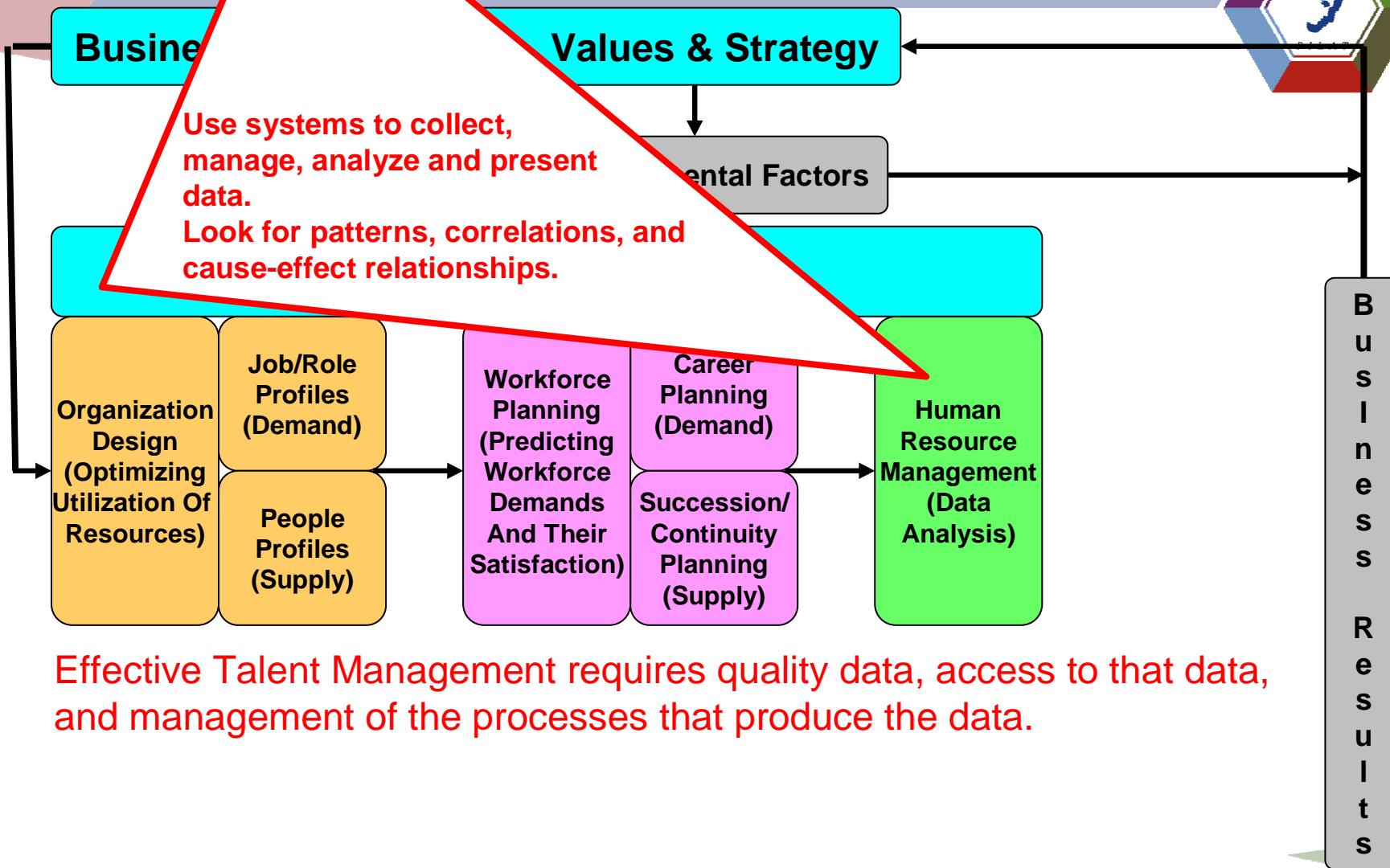
# A Contemporary Model



# A Contemporary Model

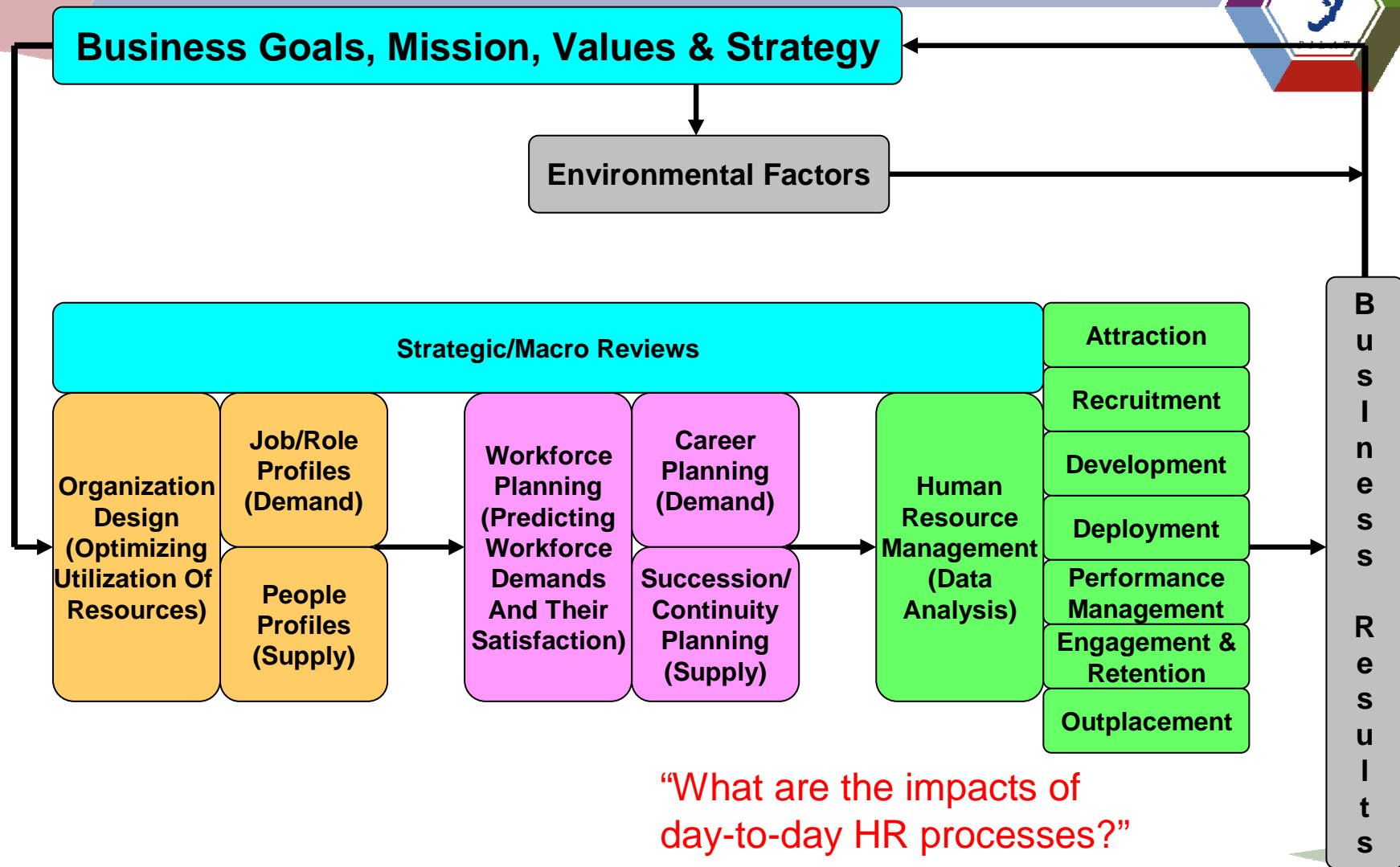


# A Contemporary Model



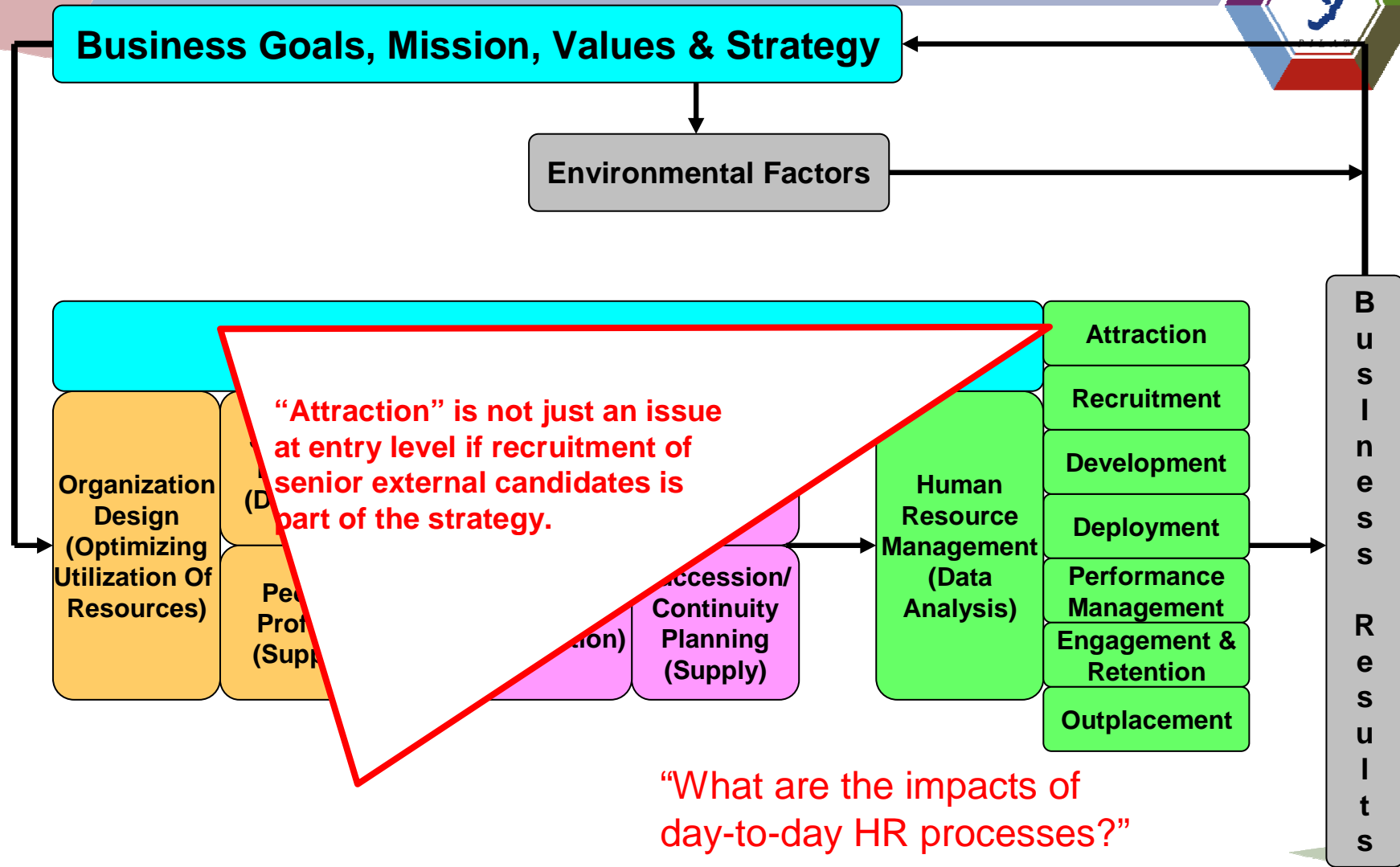
Effective Talent Management requires quality data, access to that data, and management of the processes that produce the data.

# A Contemporary Model

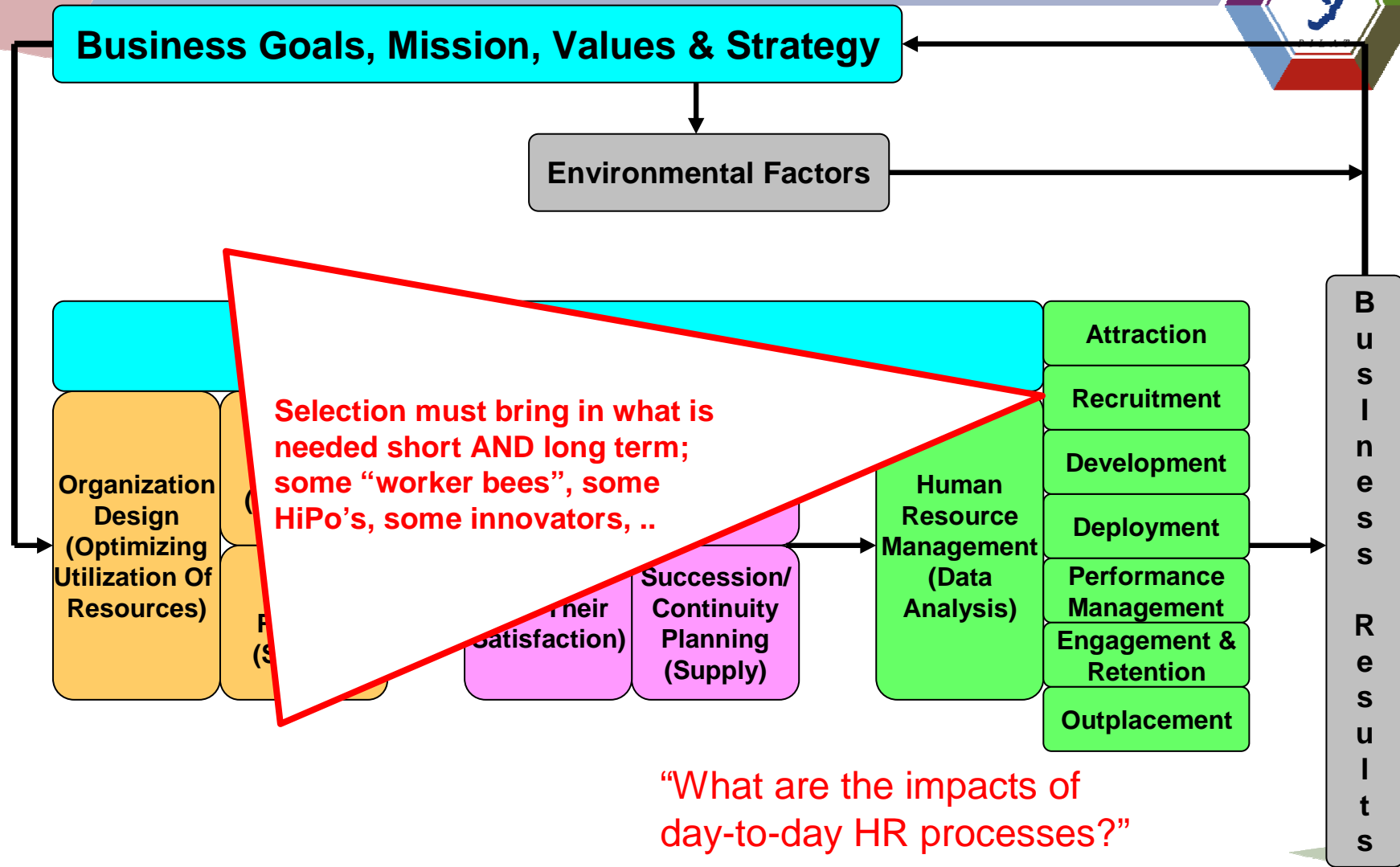


“What are the impacts of day-to-day HR processes?”

# A Contemporary Model

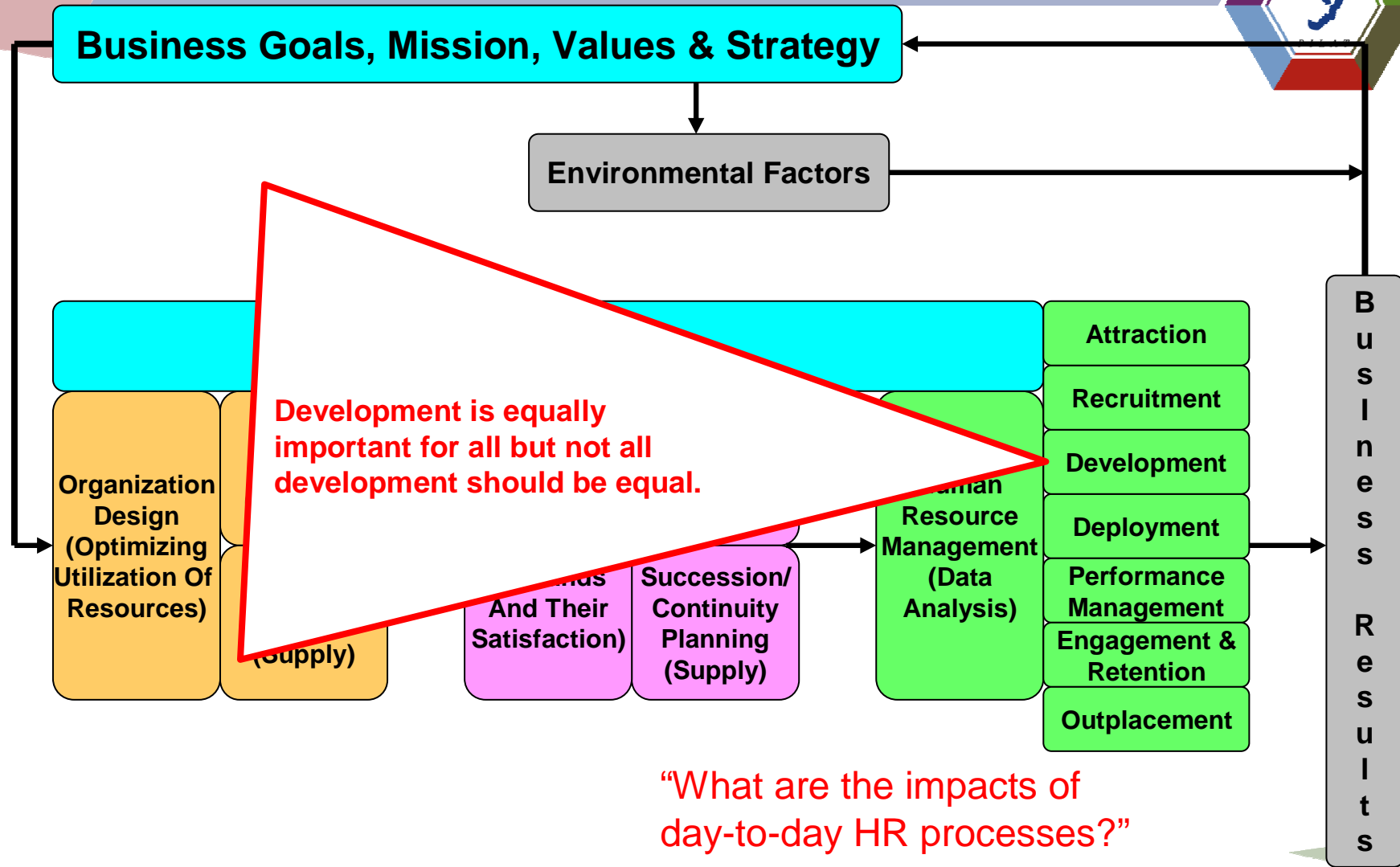


# A Contemporary Model



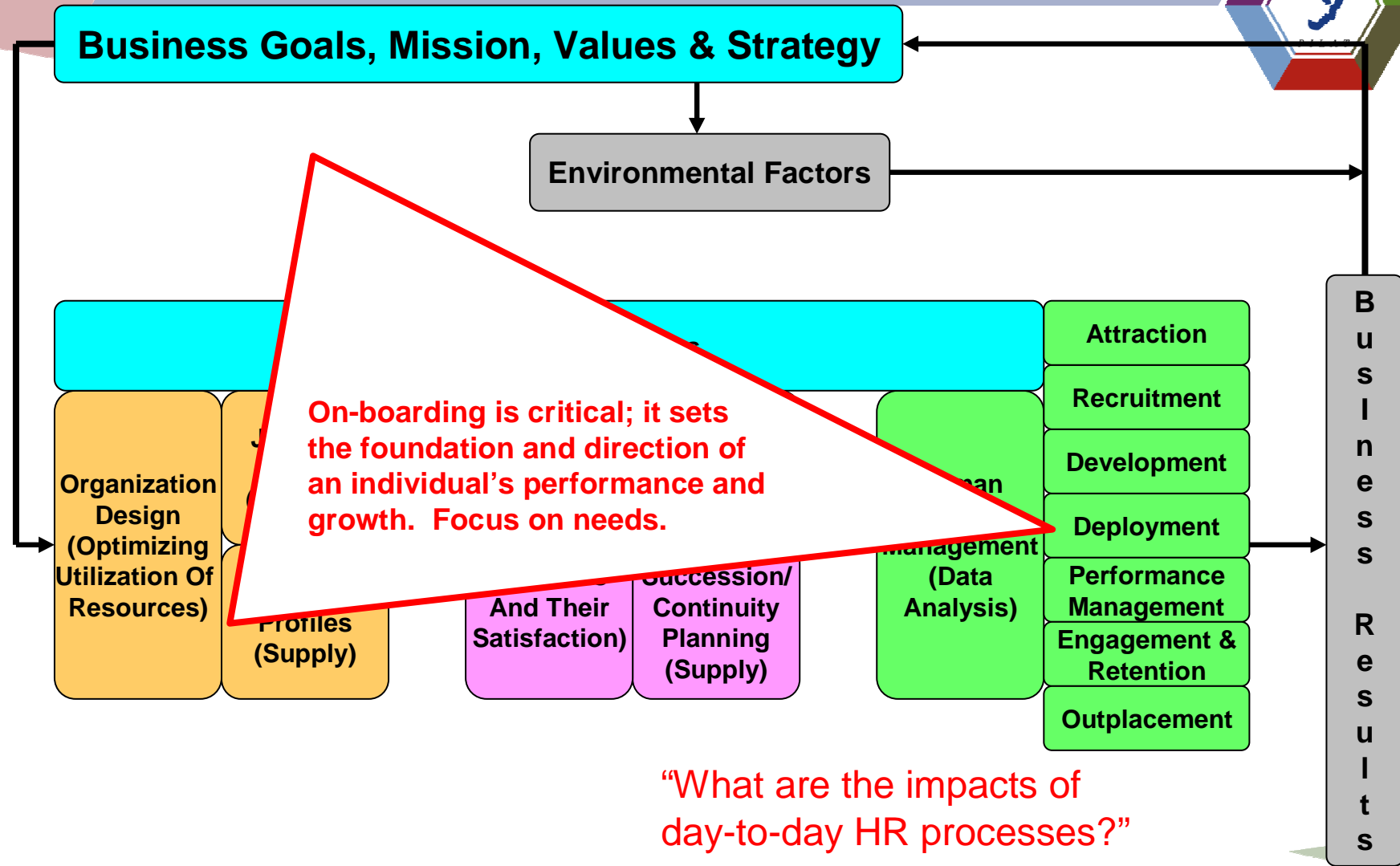
“What are the impacts of day-to-day HR processes?”

# A Contemporary Model



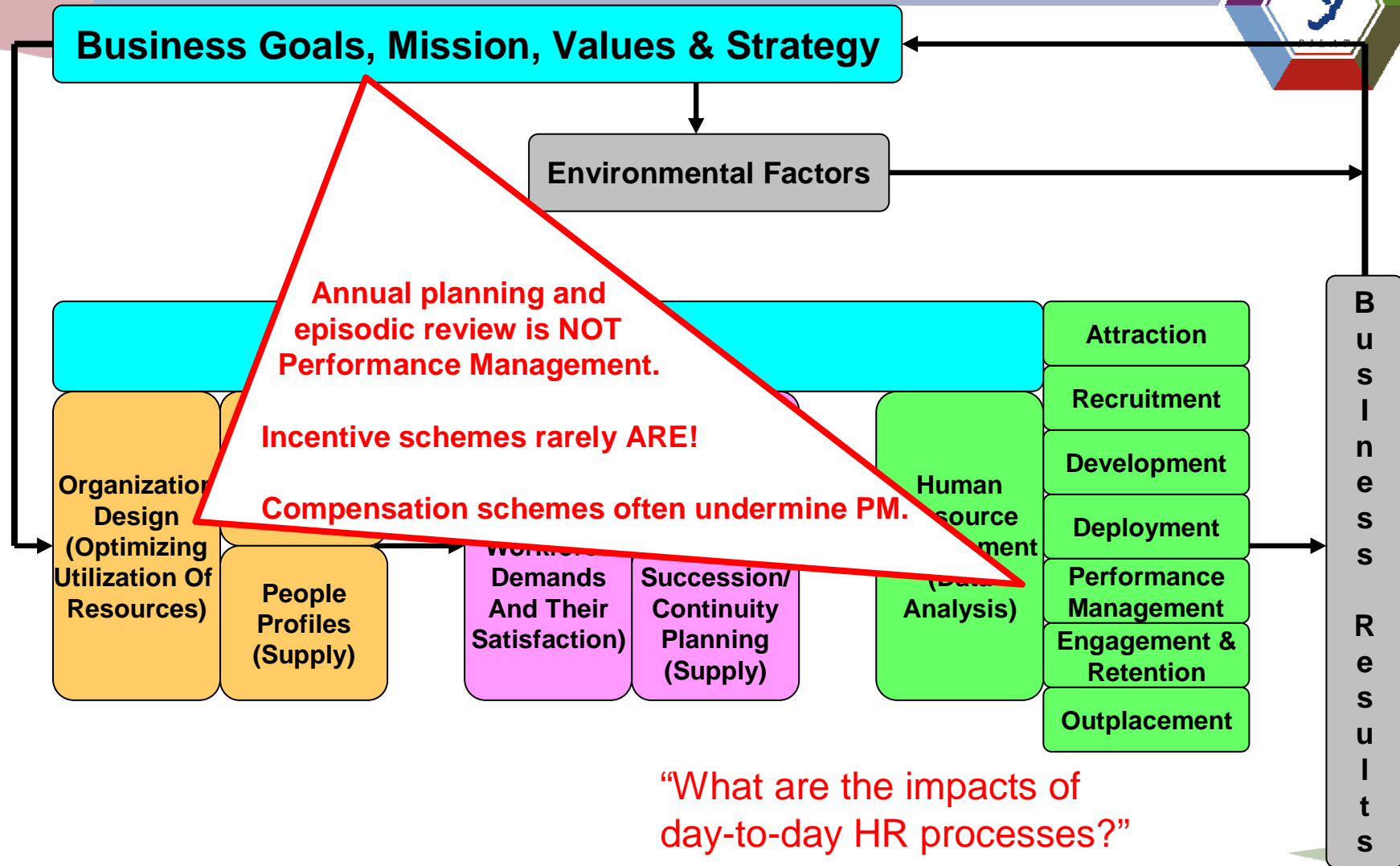
“What are the impacts of day-to-day HR processes?”

# A Contemporary Model

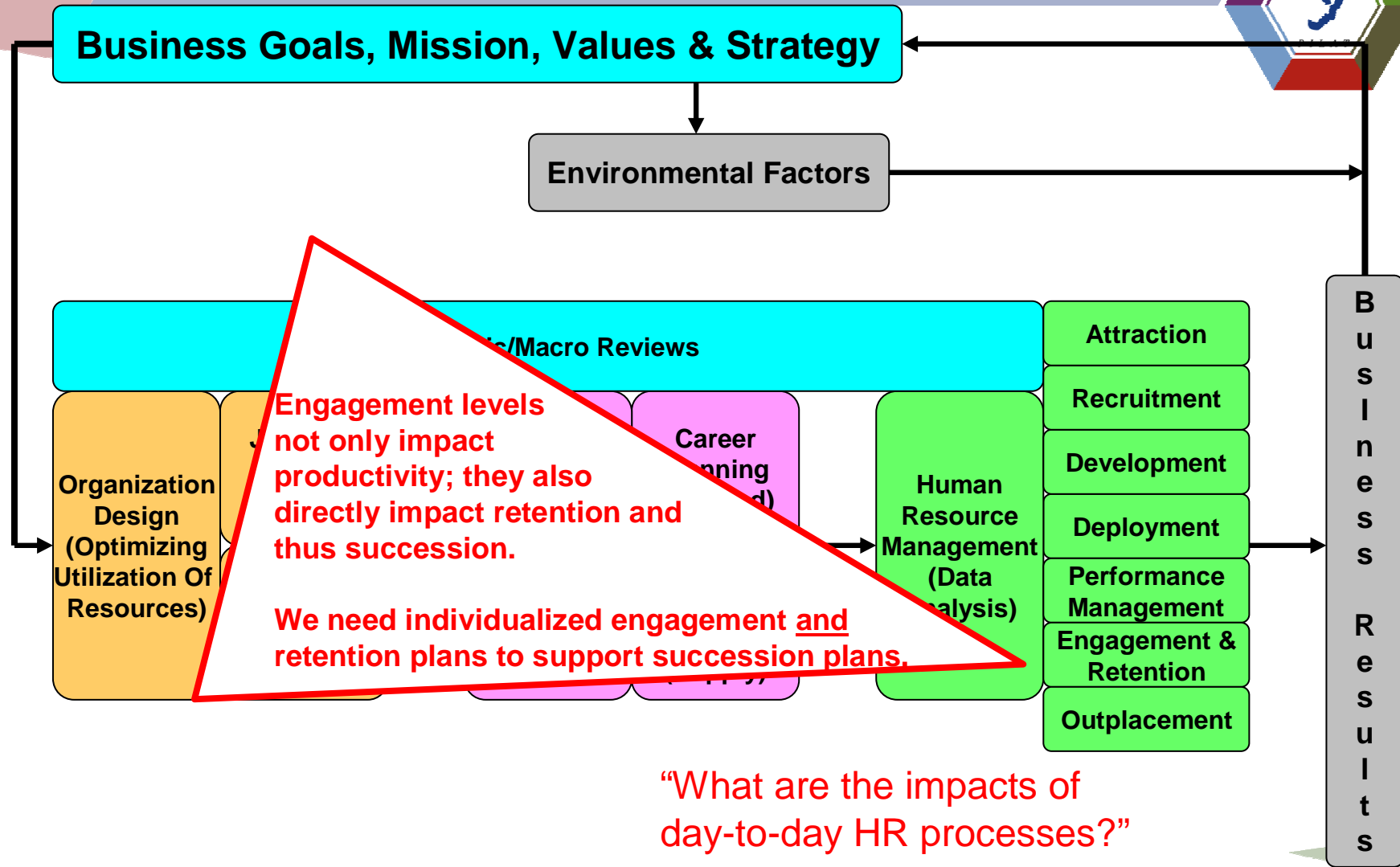


“What are the impacts of day-to-day HR processes?”

# A Contemporary Model

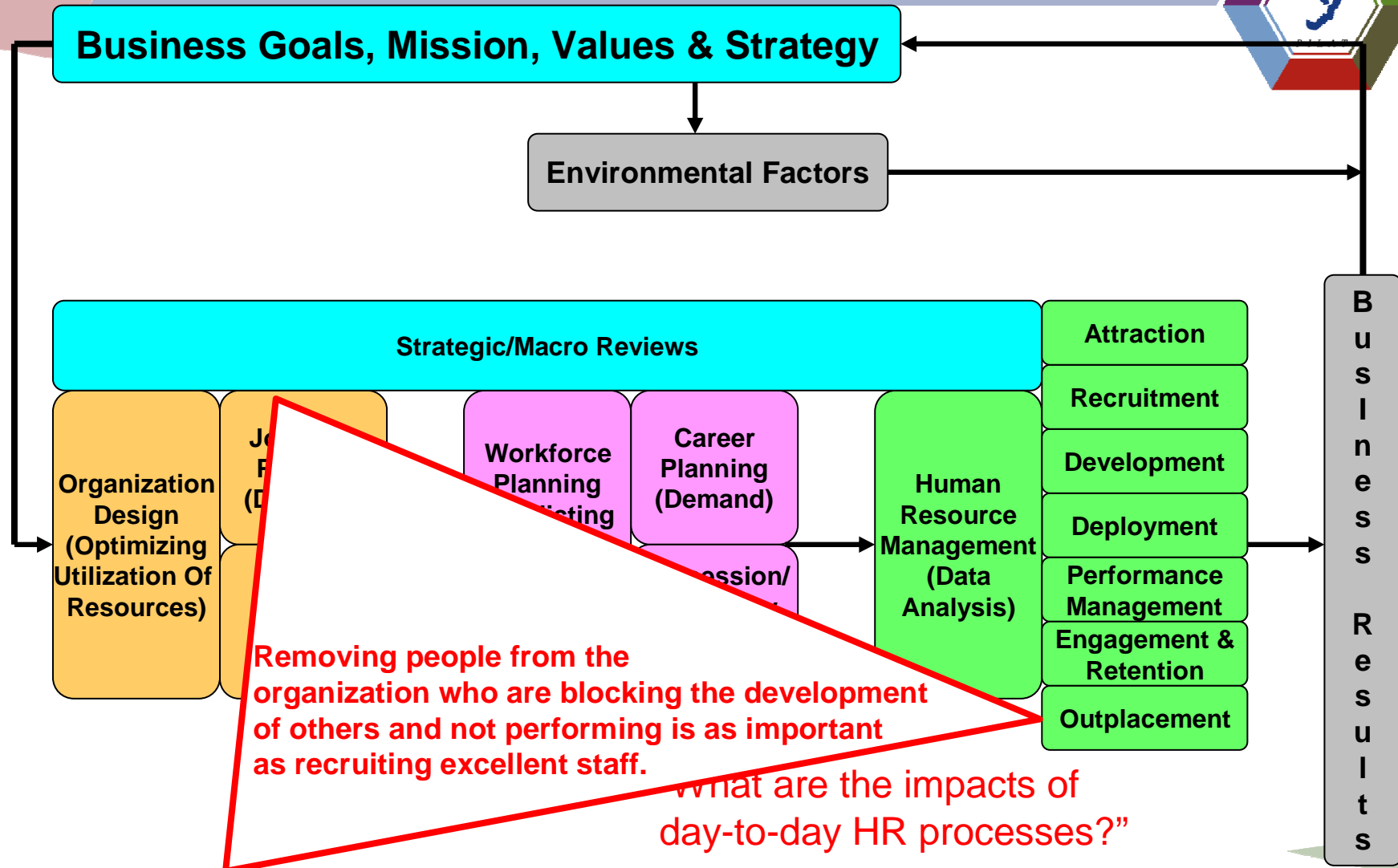


# A Contemporary Model

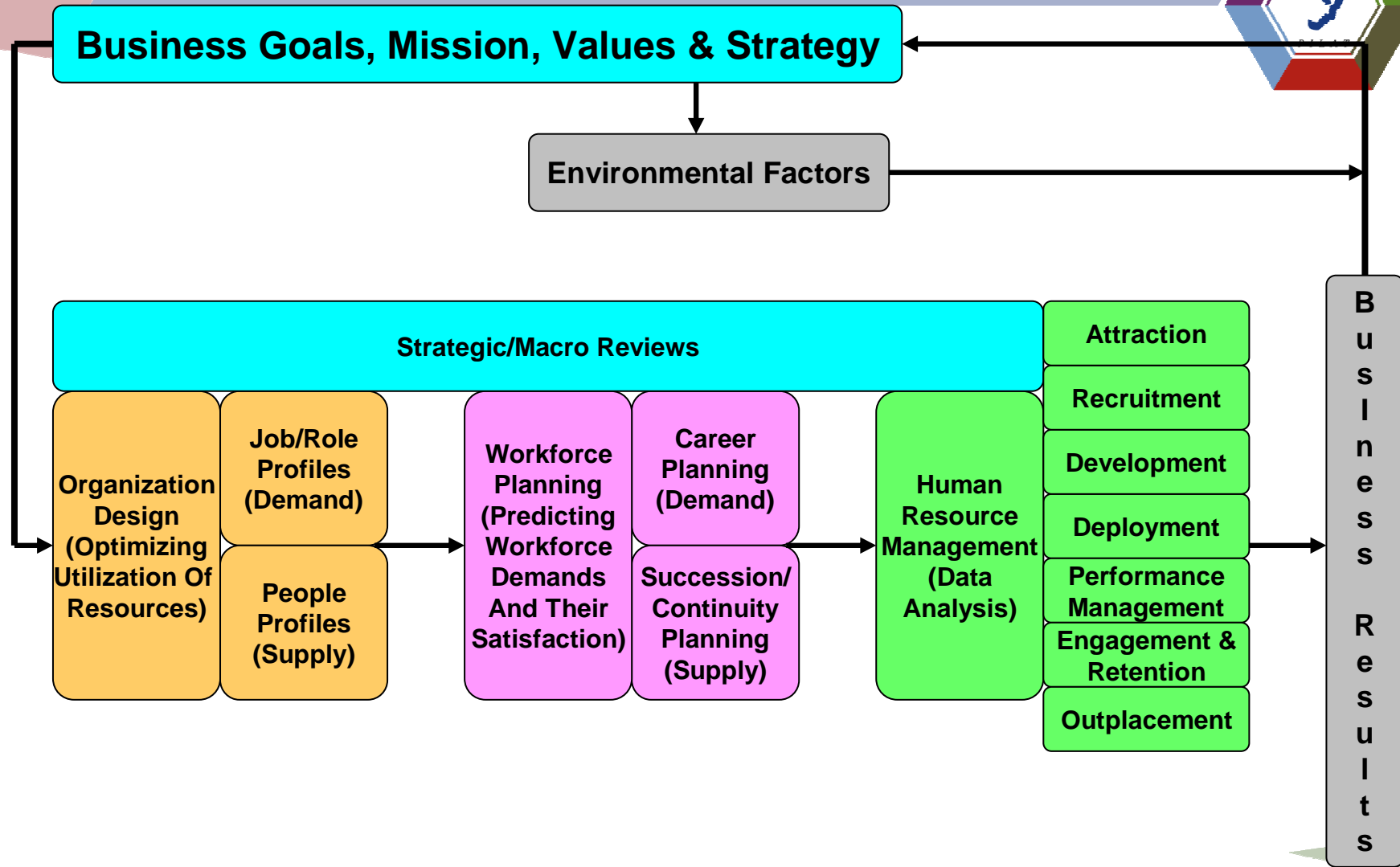


“What are the impacts of day-to-day HR processes?”

# A Contemporary Model



# A Contemporary Model



# Corporate Offices



## Pilat (North America) Inc.

496 Route 22 West

Lebanon

New Jersey, USA 08833

+1 800 338 9701

[info@pilat.com](mailto:info@pilat.com)

## Pilat Europe Ltd.

29 Hendon Lane

Finchley

London, UK N3 1PZ

+ 44 (0)20 8343 3433

[info@pilat.com](mailto:info@pilat.com)